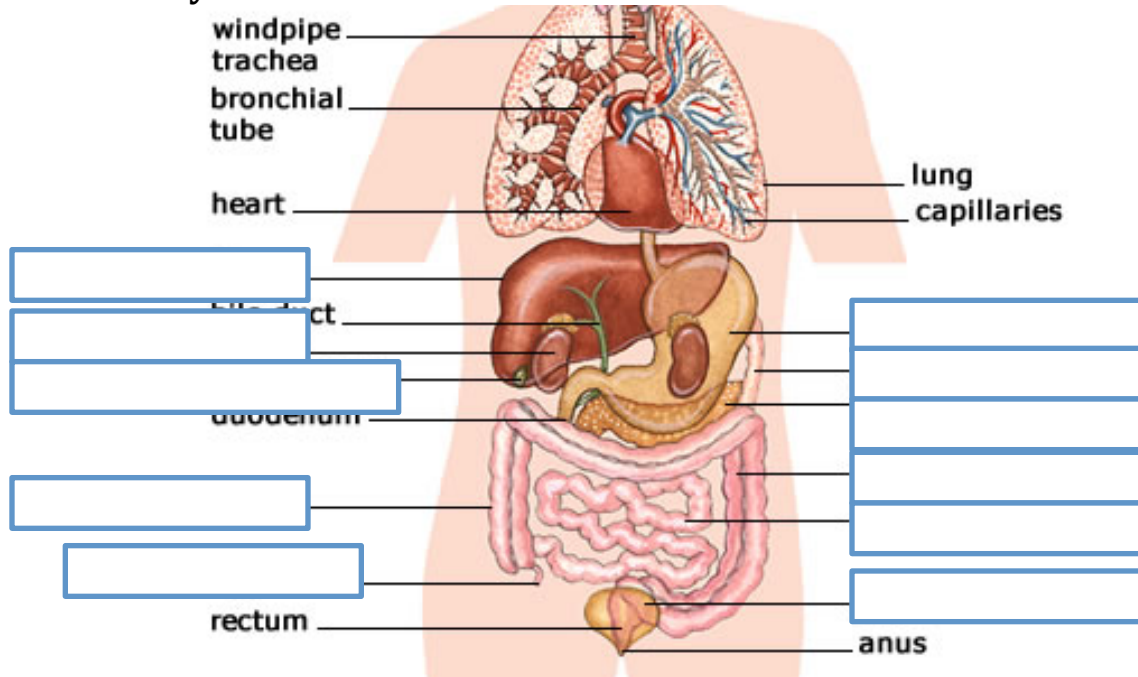


5.1 Abdominal Injuries

Anatomy



Part	Function
Liver	
Kidney	
Gall Bladder	
Stomach	
Spleen	
Pancreas	
Intestines	
Colon	
Appendix	
Bladder	

Abdominal Injuries

Abdominal pain is a common affliction for various reasons (stomach ache, motion sickness, etc.) However, if the pain is severe it good indicate something more serious. A blow to the abdomen can also cause serious underlying damage that is not visible. Your abdomen contains a lot of important _____

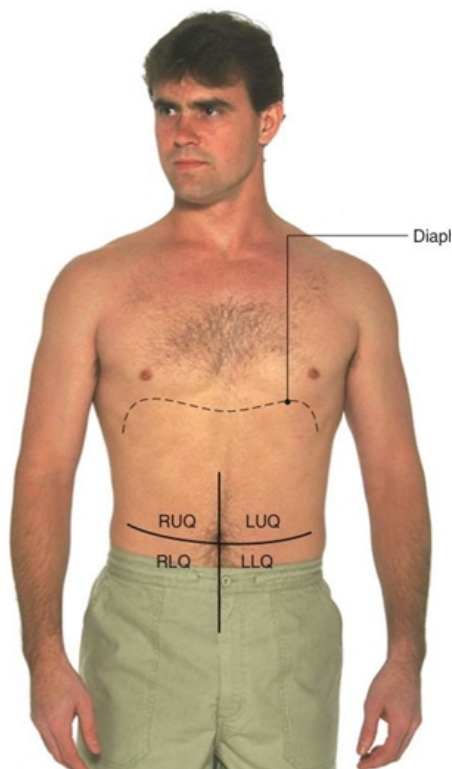
Key Signs and Symptoms

Treatment

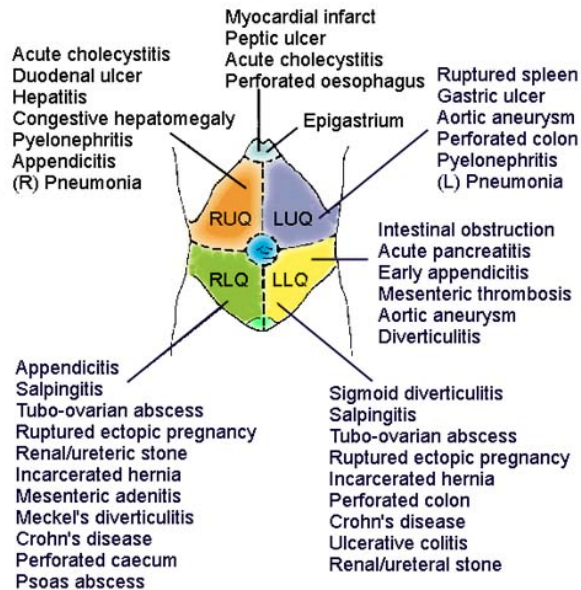
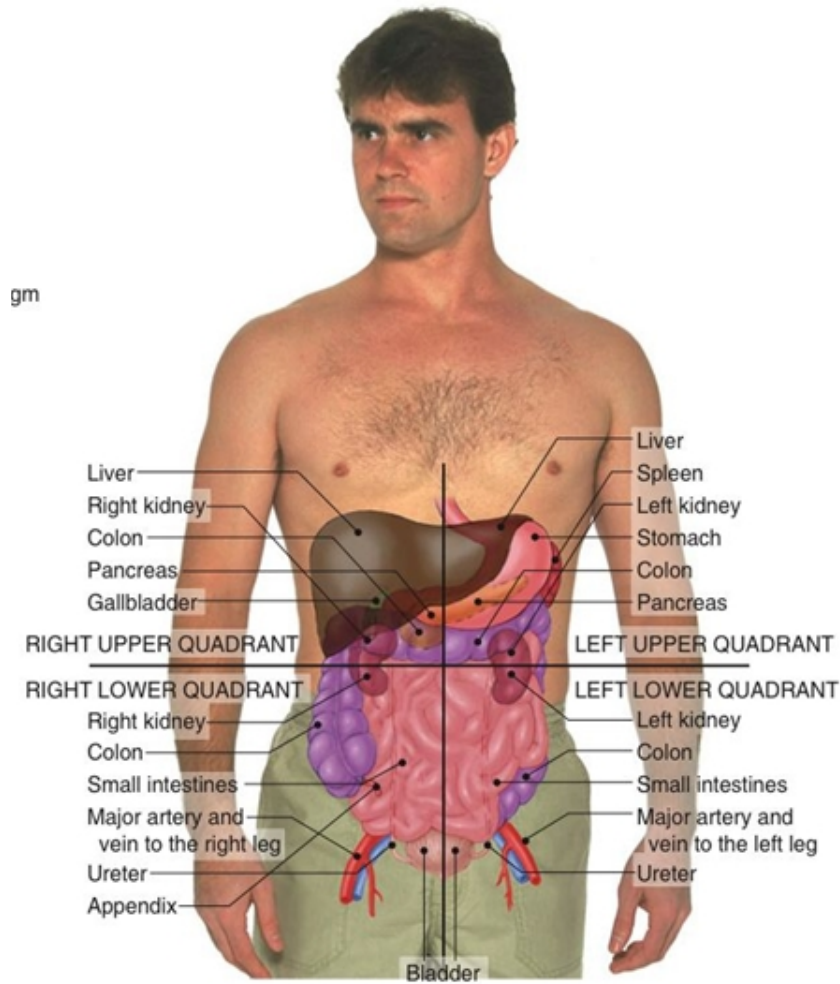
- Go to hospital

Assessment

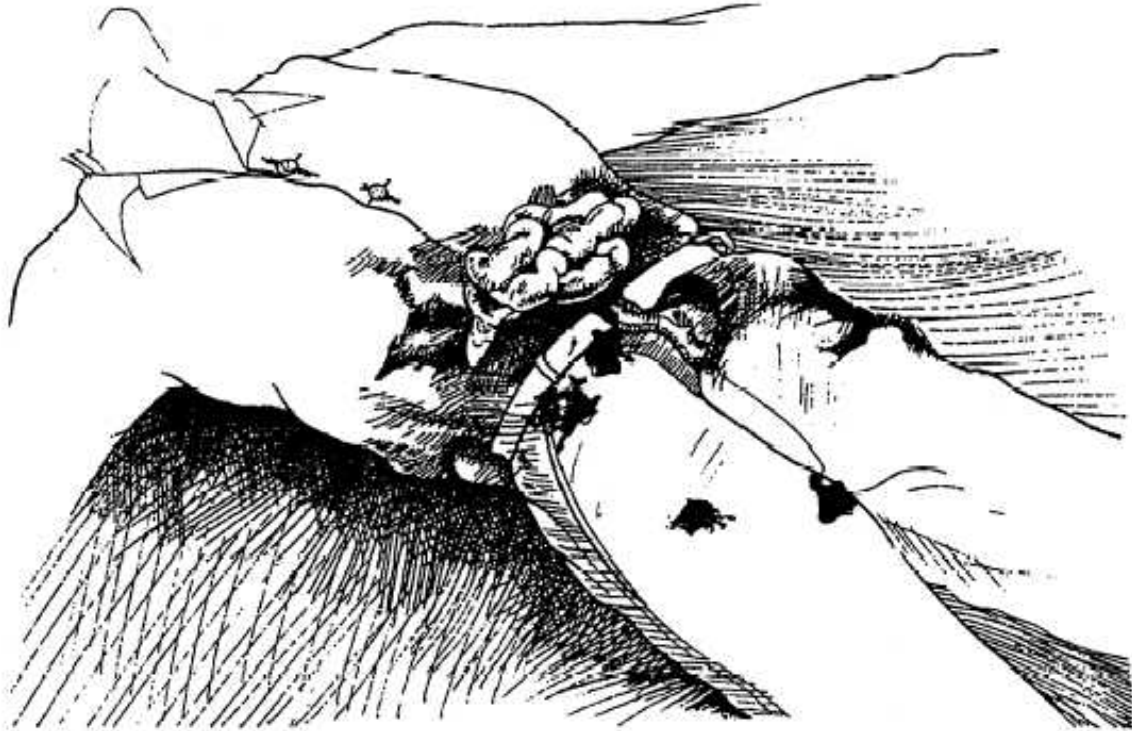
- We normally divide the abdomen into _____ for examination
(Right Upper, Right Lower, Left Upper, Left Lower)
This may give a clue as to the nature of the problem



Internal Organs



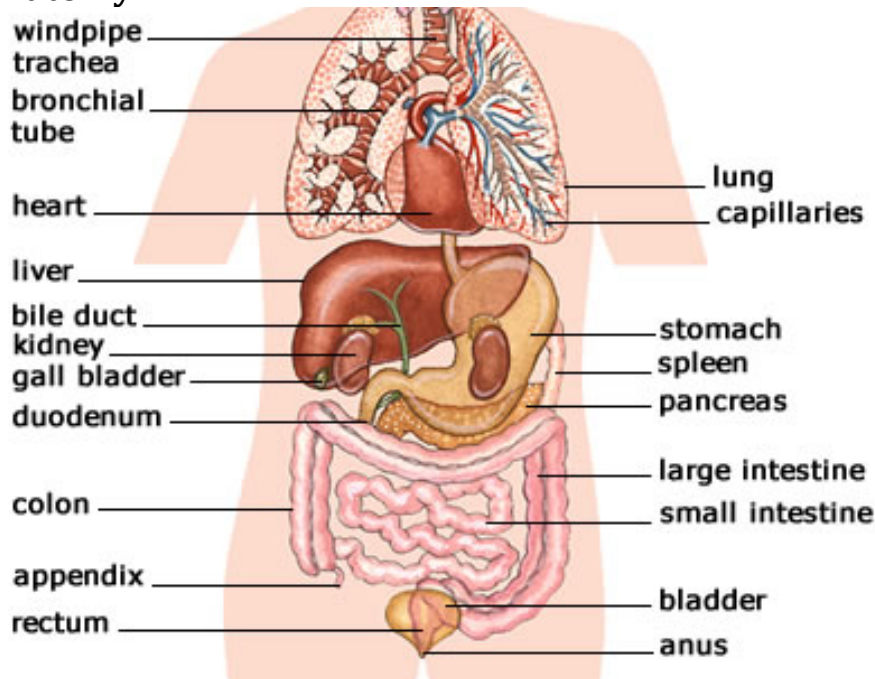
Open Injury (exposed organs)



Treatment

4.4 Abdominal Injuries (Key)

Anatomy



Part	Function
Liver	<i>digestion</i>
Kidney	<i>filters urine</i>
Gall Bladder	<i>stores bile</i>
Stomach	<i>digests food</i>
Spleen	<i>filters blood</i>
Pancreas	<i>produces hormones</i>
Intestines	<i>absorbs nutrients</i>
Colon	<i>absorbs water</i>
Appendix	<i>fights infection</i>
Bladder	<i>collects urine</i>

Abdominal Injuries

Abdominal pain is a common affliction for various reasons (stomach ache, motion sickness, etc.) However, if the pain is severe it good indicate something more serious. A blow to the abdomen can also cause serious underlying damage that is not visible. Your abdomen contains a lot of important organs, fluid, and space.

Key Signs and Symptoms

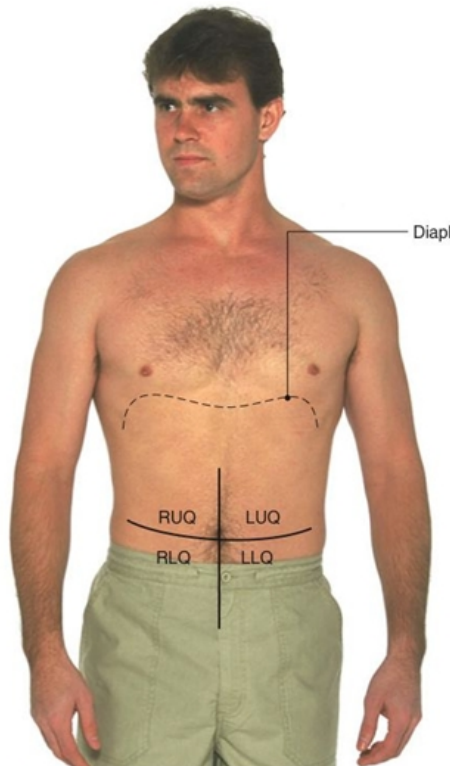
- Severe Pain
- Swelling and Tightness
- Bruising and Tenderness
- Vomiting and/or diarrhea
- Blood in urine or stool

Treatment

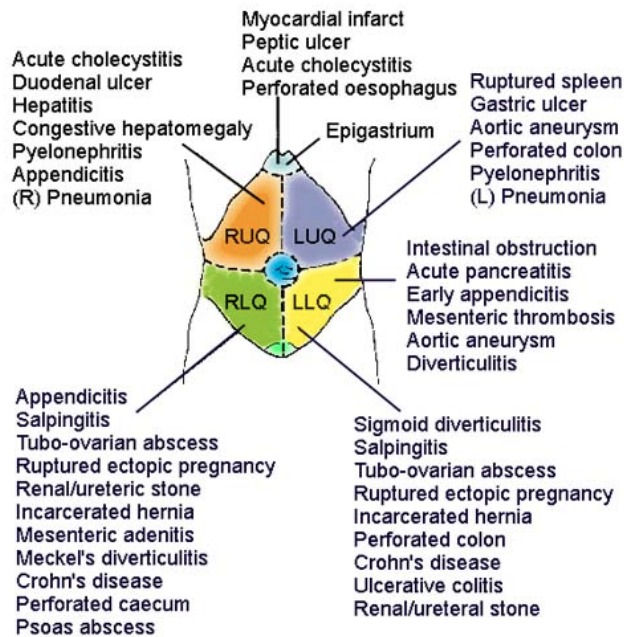
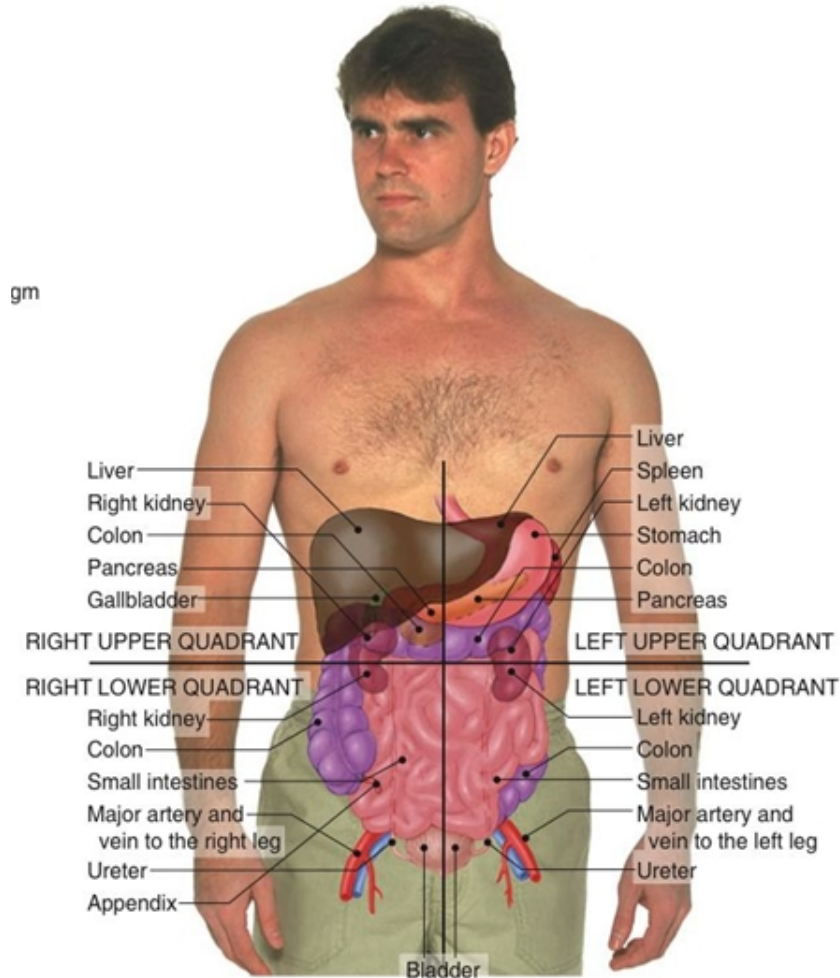
- Go to hospital

Assessment

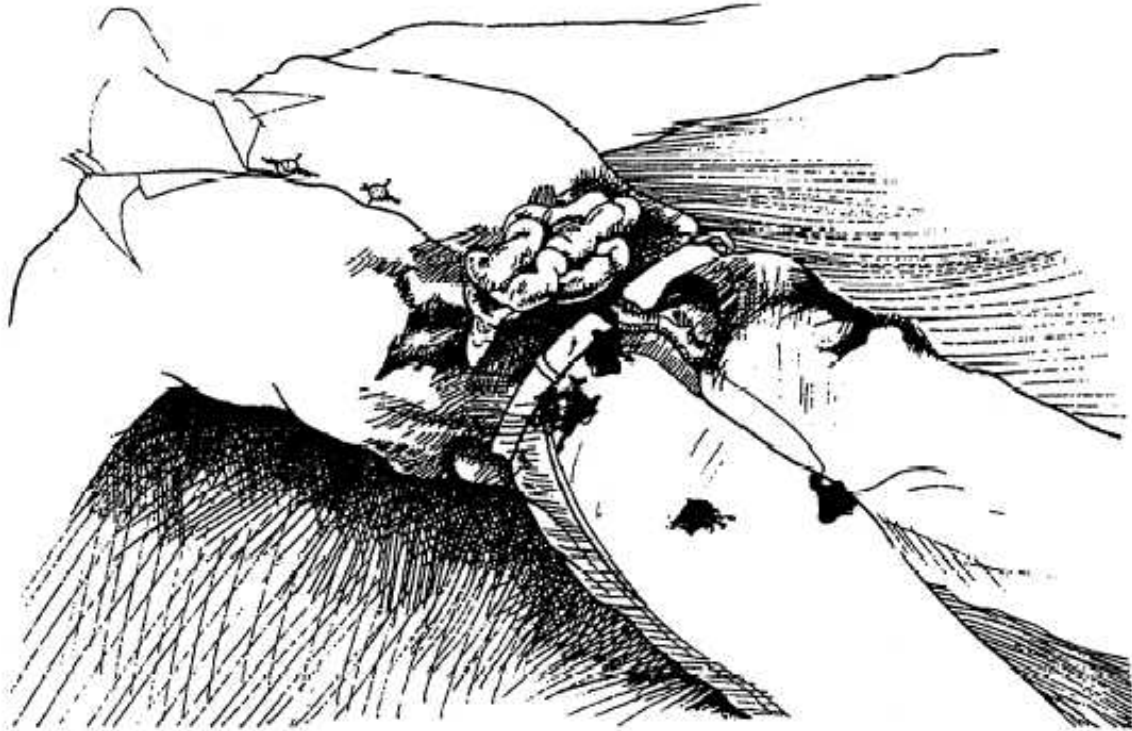
- We normally divide the abdomen into four quadrants for examination (Right Upper, Right Lower, Left Upper, Left Lower)
This may give a clue as to the nature of the problem



Internal Organs



Open Injury (exposed organs)



Treatment

If No exposed organs, control any bleeding from abdomen
DO NOT Move or Attempt to replace exposed organs
Cover with moist, sterile abdominal pads (Keep dressing moist)
Loosely Secure in place with bandages